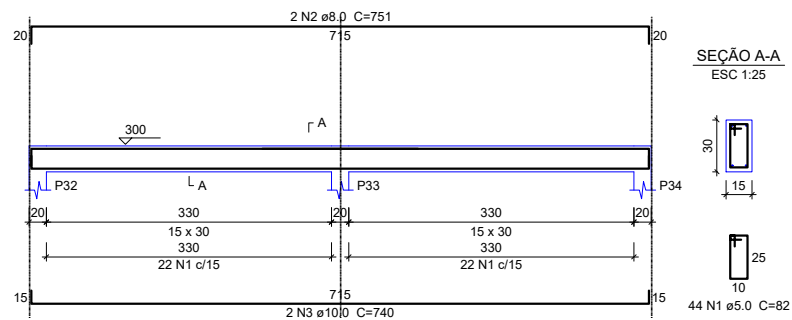
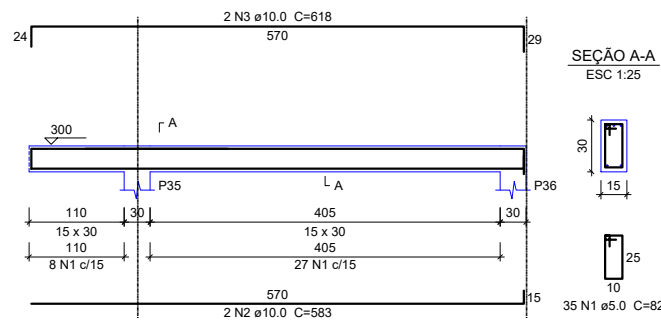
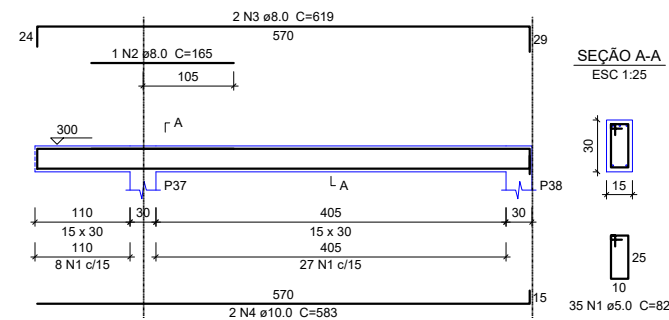
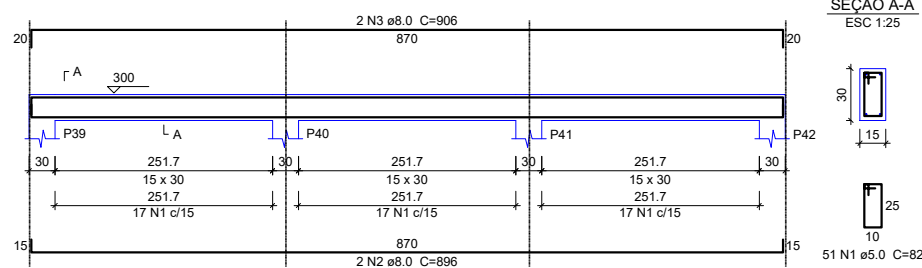
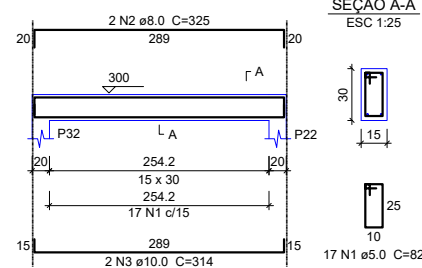
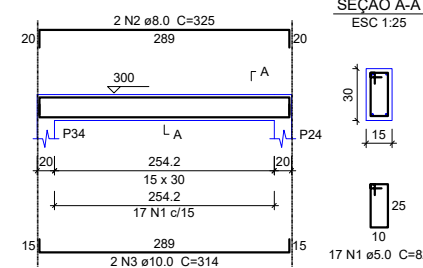
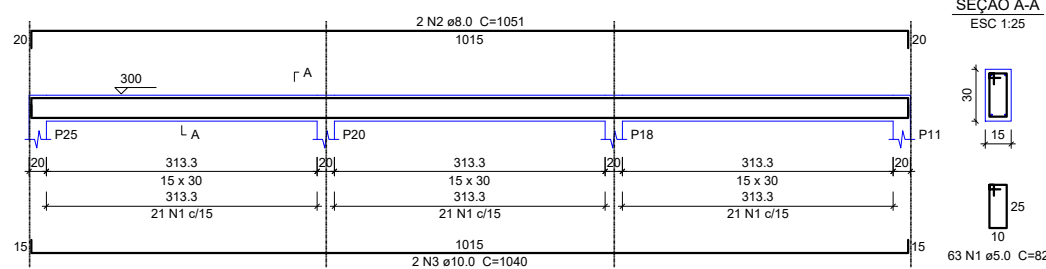
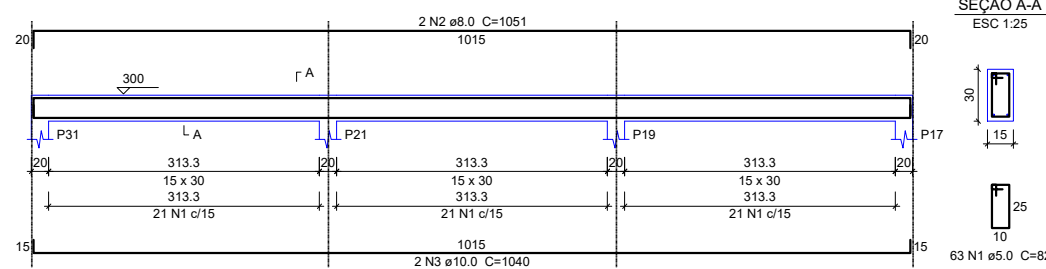
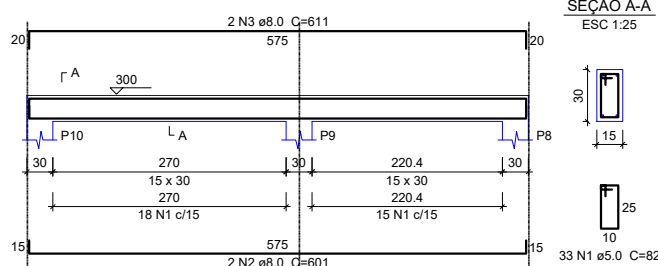
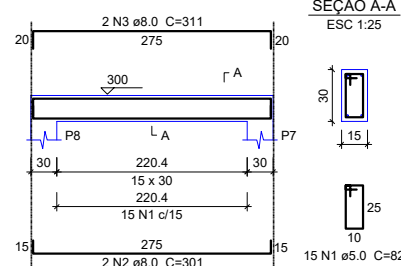
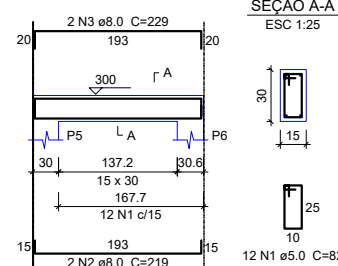
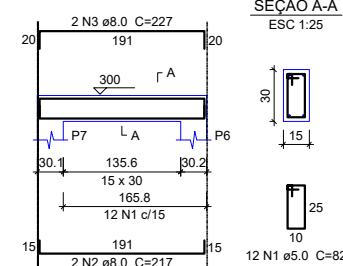


VC5
ESC 1:50VC6
ESC 1:50VC7
ESC 1:50VC8
ESC 1:50VC9
ESC 1:50VC10
ESC 1:50VC11
ESC 1:50VC12
ESC 1:50VC13
ESC 1:50VC14
ESC 1:50VC15
ESC 1:50VC17
ESC 1:50

Relação do aço

ELEMENTO	AÇO	N	DIAM	Q	UNIT (cm)	C.TOTAL (cm)
VC1	CA60	1	5.0	68	82	5576
	CA50	2	8.0	2	1154	2308
	CA50	3	8.0	2	1164	2328
VC2	CA60	1	5.0	132	82	10824
	CA50	2	8.0	2	1198	2396
	CA50	3	8.0	2	984	1968
VC3	CA50	4	10.0	4	1056	4224
	CA60	1	5.0	44	82	3608
	CA50	2	8.0	1	180	180
VC4	CA50	3	8.0	2	751	1502
	CA50	4	10.0	2	740	1480
	CA50	2	8.0	2	1198	2396
VC5	CA50	3	8.0	2	984	1968
	CA50	4	10.0	4	1056	4224
	CA60	1	5.0	44	82	3608
VC6	CA50	2	8.0	2	751	1502
	CA50	3	10.0	2	740	1480
	CA60	1	5.0	35	82	2870
VC7	CA50	3	10.0	2	618	1236
	CA50	2	10.0	2	583	1166
	CA60	1	5.0	35	82	2870
VC8	CA50	2	8.0	1	165	165
	CA50	3	8.0	2	619	1238
	CA50	4	10.0	2	583	1166
VC9	CA60	1	5.0	51	82	4182
	CA50	2	8.0	2	896	1792
	CA50	3	8.0	2	906	1812
VC10	CA60	1	5.0	17	82	1394
	CA50	2	8.0	2	325	650
	CA50	3	10.0	2	314	628
VC11	CA60	1	5.0	17	82	1394
	CA50	2	8.0	2	325	650
	CA50	3	10.0	2	314	628
VC12	CA60	1	5.0	63	82	5166
	CA50	2	8.0	2	1051	2102
	CA50	3	10.0	2	1040	2080
VC13	CA60	1	5.0	33	82	2706
	CA50	2	8.0	2	601	1202
	CA50	3	8.0	2	611	1222
VC14	CA60	1	5.0	15	82	1230
	CA50	2	8.0	2	301	602
	CA50	3	8.0	2	311	622
VC15	CA60	1	5.0	12	82	984
	CA50	2	8.0	2	219	438
	CA50	3	8.0	2	229	458
VC17	CA60	1	5.0	12	82	984
	CA50	2	8.0	2	217	434
	CA50	3	8.0	2	227	454

Resumo do aço

AÇO	DIAM	C.TOTAL (m)	PESO (kg)
CA50	8.0	325	128.2
CA60	10.0	204	125.7
CA60	5.0	633.9	97.7
PESO TOTAL			
CA50	253.9		
CA60	97.7		

Vol. de concreto total (C-25) = 5.7 m³
Área de forma total = 94.95 m²

01 VIGA COBERTURA ESC 1:175



PREFEITURA MUNICIPAL DE
VÁRZEA GRANDE
Mais por você. Mais por Várzea Grande.

PREFEITURA MUNICIPAL DE VÁRZEA GRANDE

Av. Castelo Branco, Espaço Municipal, 2500 - Centro Sul, Várzea Grande/MT
CEP 78125-700 - Fone/Fax: 65 3688 8000

PROJETO: EMEB "MARIA PEDROSA DE MIRANDA"

OBRA: REFORMA E AMPLIAÇÃO

LOCALIZAÇÃO: RUA 15 QUADRA 15 S/Nº
BAIRRO: PARQUE SABIÁ VÁRZEA GRANDE MATO GROSSO

ASSUNTO: PROJETO ESTRUTURAL

UNIDADE: METRO

AUTOR DO PROJETO:

MATHEUS MARCANZONI LEITE
ENGENHARIA CIVIL CREA-MT 042157

ESCALA: INDICADA

DATA: MARÇO/2021

ÁREAS:

ÁREA TERRENO EXISTENTE : 3.929,00m²

ÁREA CONST. EXISTENTE: 1.842,22m²

ÁREA DE AMPLIAÇÃO: 309,29m²

FOLHA Nº

06/09